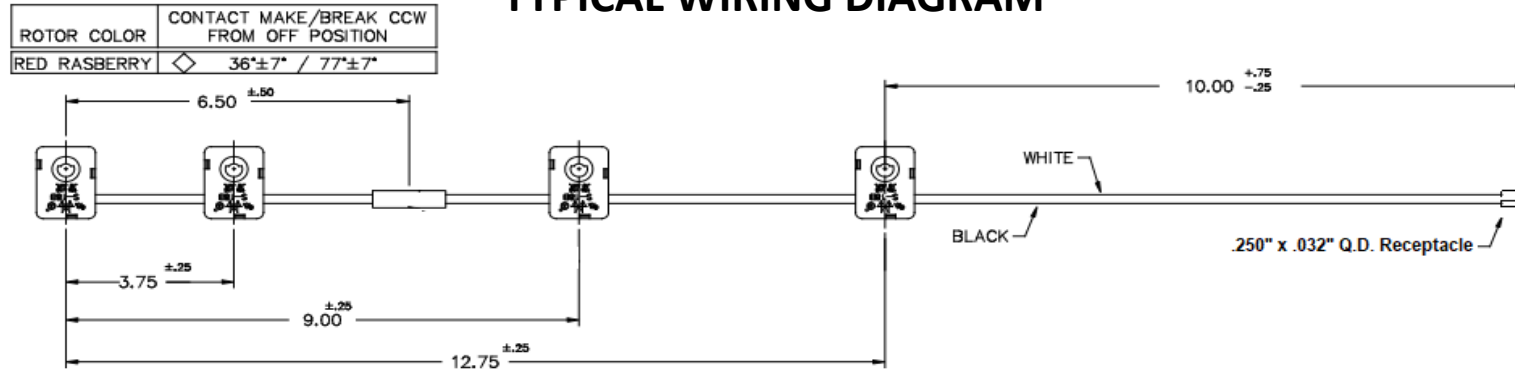


Original Equipment Manufacturer (OEM) Maxi-Valve Switch Harness Assembly 4

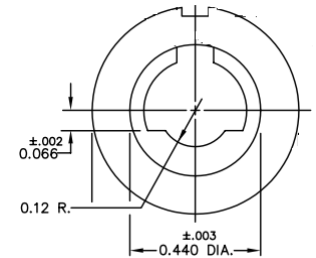
Switches 36 Make/77 Break

3070G0035C-03

TYPICAL WIRING DIAGRAM



ROTOR DIMENSIONS



SPECIFICATIONS

1. Switch Rating: 125 VAC, .10 AMP
2. Operating Temperature: 130°C (266°F)
3. Leads: Insulated Appliance Wire, 150°C, .032" thick Insulation UL3321
4. Make/Break Angle: Make 36° ± 7°, Break 77° ± 7°
5. Fits Maxi Valve Stem
6. CSA Approved



1731 Myrtle Ave. El Paso, TX. 79901
1-800-880-3212

Ph.: 915-543-3212 Fax. 915-543-3213

csmail@cesar-scott.com

www.cesar-scott.com